



Customer information packet

FDL3514M

1.5HP, 1750RPM, 1PH, 60HZ, 56H, 3532LC, TEFC, F

Brahma Engineering LLC.

Class - None

Division - Not Applicable

Specifications

Enclosure	TEFC
Frame	56H
Frame Material	Steel
Frequency	60.00 Hz
Haz Area Class and Group	None
Haz Area Division	Not Applicable
Motor Letter Type	Cap Start, Cap Run
Output @ Frequency	1.500 HP @ 60 HZ
Phase	1
Synchronous Speed @ Frequency	1800 RPM @ 60 HZ
Voltage @ Frequency	230.0 V @ 60 HZ 208.0 V @ 60 HZ 115.0 V @ 60 HZ
Agency Approvals	CSA UR
Ambient Temperature	40 °C
Auxiliary Box	NO AUXILLARY BOX
Auxiliary Box Lead Termination	None
Base Indicator	Rigid
Bearing Grease Type	Polyrex EM (-20F +300F)
Blower	None
Current @ Voltage	7.100 A @ 208.0 V 6.500 A @ 230.0 V 13.000 A @ 115.0 V
Design Code	L
Drip Cover	No Drip Cover
Duty Rating	CONT
Efficiency @ 100% Load	80.0 %
Electrically Isolated Bearing	Not Electrically Isolated
Feedback Device	NO FEEDBACK
Front Shaft Indicator	None
Heater Indicator	No Heater

Part detail

Revision	E
Type	AC
Mech. spec.	35E2560
Base	
Status	PRD/A
Elec. spec.	35WGZ997
Layout	35LYE2560
Eff. date	07-25-2024
CD Diagram	CD0320
Poles	04
Leads	4#16 A&J,2#18 B PH,1#14 #4TH
Proprietary	False
Created date	01-16-2024

High Voltage Full Load Amps	6.5 a
Insulation Class	F
Inverter Code	Not Inverter
KVA Code	J
Lifting Lugs	No Lifting Lugs
Locked Bearing Indicator	No Locked Bearing
Motor Lead Quantity/Wire Size	4 @ 16 AWG, A&J
Motor Lead Termination	Flying Leads
Motor Standards	NEMA
Motor Type	3532LC
Mounting Arrangement	F1
Number of Poles	4
Overall Length	13.78 IN
Power Factor	95
Product Family	General Purpose
Pulley End Bearing Type	Sealed Bearing
Pulley Face Code	Standard
Pulley Shaft Indicator	Standard
Rodent Screen	None
Service Factor	1.00
Shaft Diameter	0.625 IN
Shaft Ground Indicator	No Shaft Grounding
Shaft Rotation	Reversible
Shaft Slinger Indicator	Shaft Slinger
Speed	1750 rpm
Speed Code	Single Speed
Starting Method	Direct on line
Thermal Device - Bearing	None
Thermal Device - Winding	None
Vibration Sensor Indicator	No Vibration Sensor
Winding Thermal 1	Manual Thermal Overload
Winding Thermal 1 Location	KO
Winding Thermal 2	None

Nameplate

NP1280L	
CAT.NO.	FDL3514M
SPEC.	35E2560Z997G1
HP	1.5
VOLTS	115/208-230
AMP	13/7.1-6.5
RPM	1750
FRAME	56H HZ 60 PH 1
SER.F.	1.00 CODE J DES L CL F
NEMA-NOM-EFF	80 PF 95
RATING	40C AMB-CONT
CC	
DE	6205 ODE 6203
ENCL	TEFC SN

Parts list

Part number	Description	Quantity
SA421552	SA 35E2560Z997G1	1.000 ea
RA413526	RA 35E2560Z997G1	1.000 ea
OC3050F09SP	CAPACITOR 50 MFD 370 VAC	1.000 ea
TPCRD3707	THERMAL 1PH 1.00 MAN SPL LOW TEMP WELD	1.000 ea
EC1540A06SP	ELEC CAP, 540-648 MFD, 125V, 2.06D X 4.	1.000 ea
WD3006A01	RSS-2-103JT 2W 10K RES. METAL OXIDE 5%	1.000 ea
NS2512A01	INSULATOR, CONDUIT BOX X	1.000 ea
35CB3007A58	35 CB .88 DIA @ 6, 1.00 MTO W/BOOT @ 3 (1.000 ea
36GS1000SP	GASKET-CONDUIT BOX, .06 THICK #SV-330 LE	1.000 ea
51XB1016A07	10-16 X 7/16 HXWSSLD SERTYB	2.000 ea
RM1014A01SP	BUTYL RUB. THRM COV. (MENA)	1.000 ea
HA6015A11	EARED 1" THERMAL RETAINER (PLATED)	1.000 ea
NS2500A02	INSULATOR, MAN THER PROT	1.000 ea
51XB1214A10	12-14 X 5/8HX WS SL SR TYBX	2.000 ea
11XW1032G06	10-32 X .38, TAPTITE II, HEX WSHR SLTD U	1.000 ea
35EP3122K00	MASTER ODE,203 BRG,.683SH,#26 DRN,FH MTG	1.000 ea
51XW0832A07	8-32 X .44, TAPTITE II, HEX WSHR SLTD SE	2.000 ea
35CB3801	CAPACITOR COVER, CAST	1.000 ea
34GS3002	GASKET, CAPACITOR BOX	1.000 ea
NS2501A02	INSULATOR, CAPACITOR BOX	1.000 ea
51XB1016A08	10-16X 1/2HXWSSLD SERTYB	2.000 ea
HW5100A03	WAVY WASHER (W1543-017)	1.000 ea
35EP3123G00	MASTER DE,205 BRG,1.623SH,#26 DRN	1.000 ea
HW4600H11	SEAL 0.938 X 1.624 X 0.250 SINGLE LIP DB	1.000 ea
HW4600B46	V-RING SLINGER 0.875 X 1.420 X .24 VITON	1.000 ea
XY1032A02	10-32 HEX NUT DIRECTIONAL SERRATION	4.000 ea
51XB1214A16	12-14X1.00 HXWSSLD SERTYB	1.000 ea
35FH4005A32	IEC FH NO GRSR W/3 HOLES - PRIMED	1.000 ea
51XW1032A06	10-32 X .38, TAPTITE II, HEX WSHR SLTD S	3.000 ea
35CB4521GX	CONDUIT BOX LID KIT **ORDER INDIV PARTS	1.000 ea
51XW0832A07	8-32 X .44, TAPTITE II, HEX WSHR SLTD SE	4.000 ea

HW2501D13	KEY, 3/16 SQ X 1.375	1.000 ea
HA7000A04	KEY RETAINER 0.625 DIA SHAFTS	1.000 ea
85XU0407S04	4X1/4 U DRIVE PIN STAINLESS	2.000 ea
LB1087	LABEL,MANUAL RESET (ROLL LABEL)	1.000 ea
MJ5001A27	32220KN GRAY SEALER *MIN BUY 4 QTS=1GAL	0.001 qt
WD1000A15	3-520132-2 AMP FLAG (4M/RL NON-CANC/NON-	4.000 ea
HA7010	CAPACITOR RETENTION CLAMP	1.000 ea
MJ1000A02	GREASE, POLYREX EM EXXON	0.050 lb
35FN3002A05SP	EXFN, PLASTIC, 6.376 OD, .638 ID	1.000 ea
MG1025C02	WILKOFASST SG, 787.105, TAN	0.017 ga
HA3100A22	THRUBOLT 10-32 X 10.125	4.000 ea
TP5059	GENERIC WELDED THERMAL, 7" LEAD KIT	1.000 ea
SP5181A01	MODEL 35 LC TORQ STAT SWITCH LEAD ASSY	1.000 ea
LC0269	1PH,DV,REV,THERMAL,7 LD,L.AMP THRU HTR H	1.000 ea
LB1624	COMBINED WARNING LABEL, ISO/ANSI PICTOGR	1.000 ea
MN416A01	TAG-INSTAL-MAINT no wire (2500 bx)11/22	1.000 ea
NP1280L	ALUM FARM DUTY UL CC THERMAL	1.000 ea
36PA1000	PKG GRP, PRINT PK1016A06	1.000 ea
FE-0000001	ZRTG FE ASSEMBLY	1.000 ea
PE-0000002	ZRTG PE ASSEMBLY	1.000 ea

Accessories

Part number	Description	Multiplier
35-3300FD	C FACE KIT FARM DUTY 143-5TC ENCL, 6205	A8
35EP1506A01SP	D-FLANGE KIT	A8

AC Induction Motor Performance Data

Record # 104835

Typical performance - not guaranteed values

Winding: 35WGZ997-R001		Type: 3532LC	Enclosure: TEFC		
Nameplate Data			115 V, 60 Hz: Low Voltage Connection		
Rated Output (HP)	1.5	Full Load Torque	4.597 LB-FT		
Volts	115/208-230	Start Configuration	direct on line		
Full Load Amps	13/7.1-6.5	Breakdown Torque	11.5 LB-FT		
R.P.M.	1750	Pull-up Torque	9.24 LB-FT		
Hz	60 Phase	1	Locked-rotor Torque	11.6 LB-FT	
NEMA Design Code	L	KVA Code	J	Starting Current	93.9 A
Service Factor (S.F.)			1	No-load Current	3.64 A
NEMA Nom. Eff.	80	Power Factor	95	Line-line Res. @ 25°C	2.1749 Ω A Ph 1.8972 Ω B Ph
Rating - Duty		40C AMB-CONT		Temp. Rise @ Rated Load	64°C

Load Characteristics 115 V, 60 Hz, 1.5 HP

% of Rated Load	25	50	75	100	125	150
Power Factor	78	89	93	95	95	95
Efficiency	64.7	76.4	80.1	80.5	79.1	75.6
Speed	1788.1	1776.5	1764.6	1750.3	1735.8	1712.2
Line amperes	4.97	7.32	9.99	13	16.1	20.2

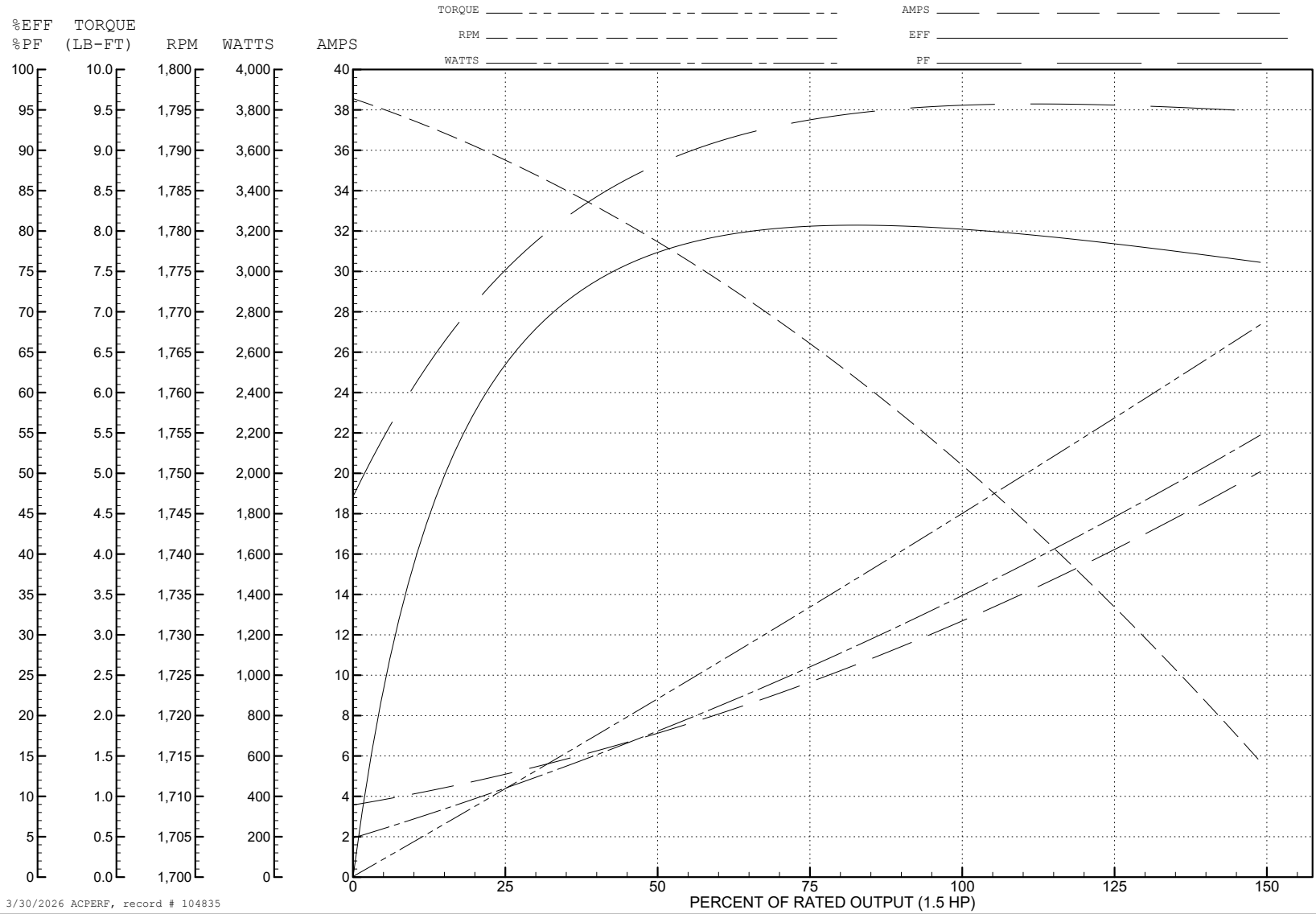
ABB Motors and Mechanical Inc.

WINDING # 35WGZ997

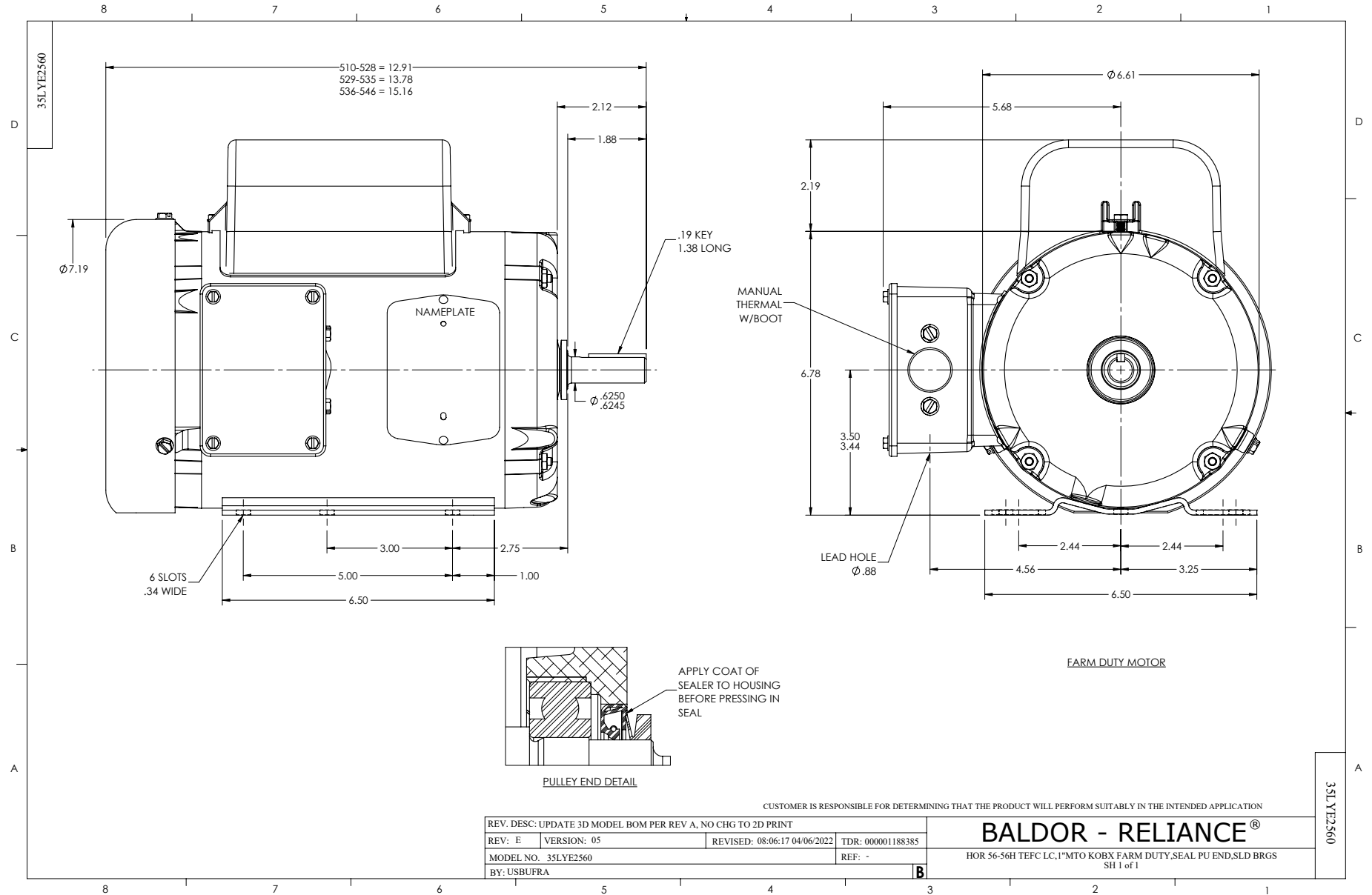
Typical performance - not guaranteed values.

1.5 HP 1 PH 60 HZ 1750 RPM 115 V 3532LC

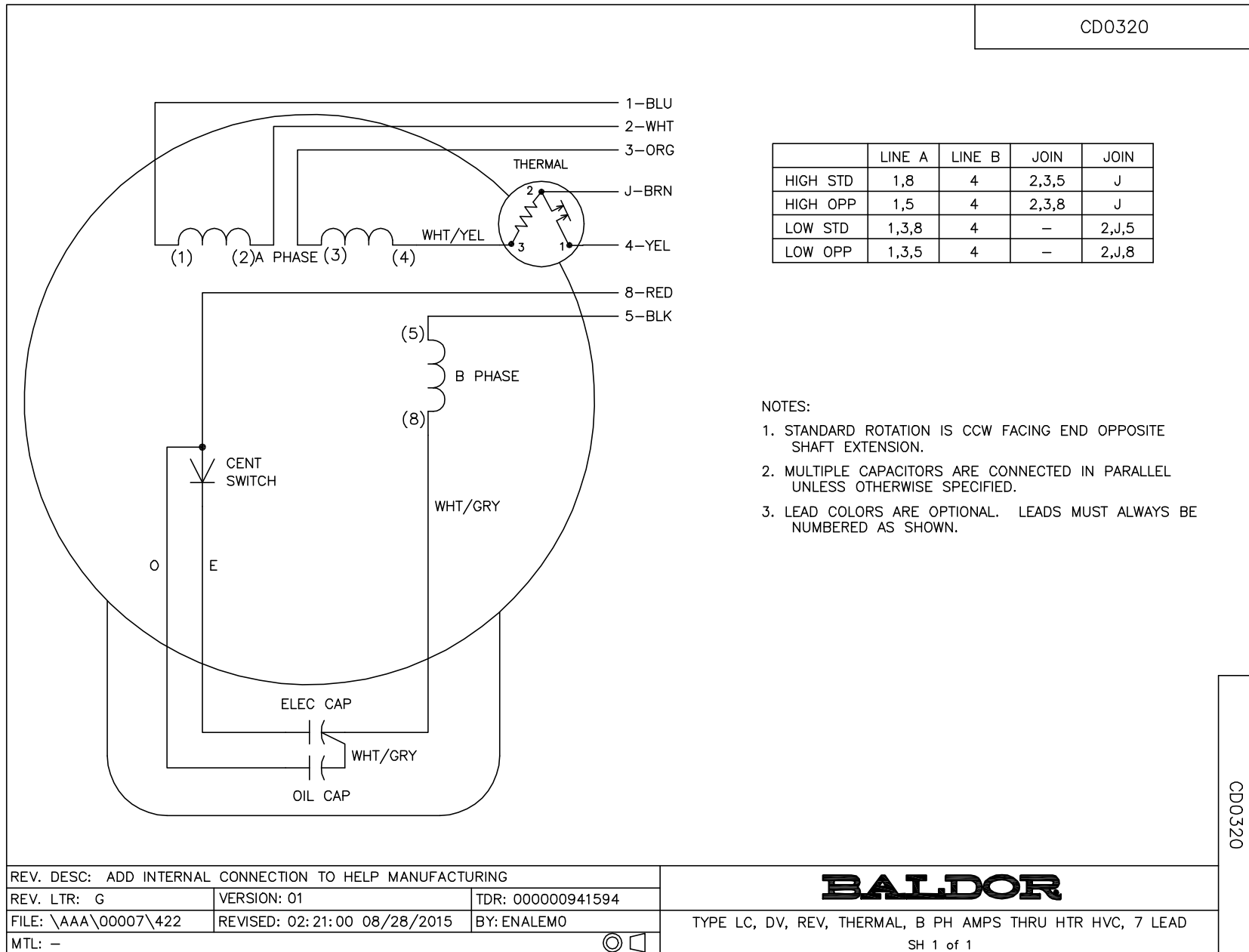
TORQUES (LB-FT): PO=11.5 PU=9.24 LR=11.6 LRA=93.9



3/30/2026 ACPERF, record # 104835



CD0320



	LINE A	LINE B	JOIN	JOIN
HIGH STD	1,8	4	2,3,5	J
HIGH OPP	1,5	4	2,3,8	J
LOW STD	1,3,8	4	-	2,J,5
LOW OPP	1,3,5	4	-	2,J,8

NOTES:

1. STANDARD ROTATION IS CCW FACING END OPPOSITE SHAFT EXTENSION.
2. MULTIPLE CAPACITORS ARE CONNECTED IN PARALLEL UNLESS OTHERWISE SPECIFIED.
3. LEAD COLORS ARE OPTIONAL. LEADS MUST ALWAYS BE NUMBERED AS SHOWN.

CD0320

REV. DESC: ADD INTERNAL CONNECTION TO HELP MANUFACTURING		
REV. LTR: G	VERSION: 01	TDR: 00000941594
FILE: \AAA\00007\422	REVISED: 02:21:00 08/28/2015	BY: ENALEMO
MTL: -		© □

BALDOR

TYPE LC, DV, REV, THERMAL, B PH AMPS THRU HTR HVC, 7 LEAD
SH 1 of 1