



Customer information packet

FDL3510M

1HP, 1740RPM, 1PH, 60HZ, 56H, 3524L, TEFC, F1, N

Brahma Engineering LLC.

Class - None

Division - Not Applicable

Specifications

Enclosure	TEFC
Frame	56H
Frame Material	Steel
Frequency	60.00 Hz
Haz Area Class and Group	None
Haz Area Division	Not Applicable
Motor Letter Type	Cap Start, Induction Run
Output @ Frequency	1.000 HP @ 60 HZ
Phase	1
Synchronous Speed @ Frequency	1800 RPM @ 60 HZ
Voltage @ Frequency	115.0 V @ 60 HZ 230.0 V @ 60 HZ
Agency Approvals	C UR US
Ambient Temperature	40 °C
Auxiliary Box	NO AUXILLARY BOX
Auxiliary Box Lead Termination	None
Base Indicator	Rigid
Bearing Grease Type	Polyrex EM (-20F +300F)
Blower	None
Current @ Voltage	12.600 A @ 115.0 V 6.300 A @ 230.0 V
Design Code	L
Drip Cover	No Drip Cover
Duty Rating	CONT
Efficiency @ 100% Load	68.0 %
Electrically Isolated Bearing	Not Electrically Isolated
Feedback Device	NO FEEDBACK
Front Shaft Indicator	None
Heater Indicator	No Heater
High Voltage Full Load Amps	6.3 a
Insulation Class	F
Inverter Code	Not Inverter

Part detail

Revision	G
Type	AC
Mech. spec.	35E2559
Base	
Status	PRD/A
Elec. spec.	35WGG385
Layout	35LYE2559
Eff. date	09-24-2025
CD Diagram	CD0269
Poles	04
Leads	4#16 A&J,2#18 B PH,1#14 #4TH
Proprietary	False
Created date	07-21-2022

KVA Code	L
Lifting Lugs	No Lifting Lugs
Locked Bearing Indicator	No Locked Bearing
Motor Lead Quantity/Wire Size	4 @ 16 AWG, A&J
Motor Lead Termination	Flying Leads
Motor Standards	NEMA
Motor Type	3524L
Mounting Arrangement	F1
Number of Poles	4
Overall Length	12.91 IN
Power Factor	74
Product Family	General Purpose
Pulley End Bearing Type	Sealed Bearing
Pulley Face Code	Standard
Pulley Shaft Indicator	Standard
Rodent Screen	None
Service Factor	1.15
Shaft Diameter	0.625 IN
Shaft Ground Indicator	No Shaft Grounding
Shaft Rotation	Reversible
Shaft Slinger Indicator	Shaft Slinger
Speed	1740 rpm
Speed Code	Single Speed
Starting Method	Direct on line
Thermal Device - Bearing	None
Thermal Device - Winding	None
Vibration Sensor Indicator	No Vibration Sensor
Winding Thermal 1	Manual Thermal Overload
Winding Thermal 1 Location	KO
Winding Thermal 2	None

Nameplate

NP1280L									
CAT.NO.	FDL3510M								
SPEC.	35E2559G385G1								
HP	1								
VOLTS	115/230								
AMP	12.6/6.3								
RPM	1740								
FRAME	56H	HZ	60	PH	1				
SER.F.	1.15	CODE	L	DES	L	CL	F		
NEMA-NOM-EFF	68	PF	74						
RATING	40C AMB-CONT								
CC									
DE	6205	ODE	6203						
ENCL	TEFC	SN							

Parts list

Part number	Description	Quantity
SA407244	SA 35E2559G385G1	1.000 ea
RA398743	RA 35E2559G385G1	1.000 ea
TPMRD4748SP	THERMAL 1PH 0.75 MAN SPL LOW TEMP	1.000 ea
EC1645B06	ELEC CAP 165V 2.0 X 4.3	1.000 ea
NS2512A01	INSULATOR, CONDUIT BOX X	1.000 ea
35CB3007A59	35 CB .88 DIA @ 6:00, .75 MTO W/BOOT @ 3	1.000 ea
36GS1000SP	GASKET-CONDUIT BOX, .06 THICK #SV-330 LE	1.000 ea
51XB1016A07	10-16 X 7/16 HXWSSLD SERTYB	2.000 ea
11XW1032G06	10-32 X .38, TAPTITE II, HEX WSHR SLTD U	1.000 ea
HA6001A01	THERMAL RETAINER (PLATED)	1.000 ea
RM1014A01SP	BUTYL RUB. THRM COV. (MENA)	1.000 ea
51XB1214A10	12-14 X 5/8HX WS SL SR TYBX	2.000 ea
35EP3122K00	MASTER ODE,203 BRG,.683SH,#26 DRN,FH MTG	1.000 ea
51XW0832A07	8-32 X .44, TAPTITE II, HEX WSHR SLTD SE	2.000 ea
35CB4802A02SP	CAPACITOR COVER, STAMPED X	1.000 ea
35GS3001A02	GASKET, CA.COVER, 5.38 LONG .06 CS301	1.000 ea
51XB1016A05	10-16X5/16HX WA SL SR TYB (F/S)	2.000 ea
HW5100A03	WAVY WASHER (W1543-017)	1.000 ea
35EP3123G00	MASTER DE,205 BRG,1.623SH,#26 DRN	1.000 ea
HW4600H11	SEAL 0.938 X 1.624 X 0.250 SINGLE LIP DB	1.000 ea
HW4600B32SP	V-RING SLINGER 1.000 X 1.540 X .24 VITON	1.000 ea
51XB1214A16	12-14X1.00 HXWSSLD SERTYB	1.000 ea
35FH4005A32SP	IEC FH NO GRSR W/3 HOLES - PRIMED	1.000 ea
51XW1032A06	10-32 X .38, TAPTITE II, HEX WSHR SLTD S	3.000 ea
35CB4521GX	CONDUIT BOX LID KIT **ORDER INDIV PARTS	1.000 ea
51XW0832A07	8-32 X .44, TAPTITE II, HEX WSHR SLTD SE	4.000 ea
HW2501D13	KEY, 3/16 SQ X 1.375	1.000 ea
HA7000A04	KEY RETAINER 0.625 DIA SHAFTS	1.000 ea
85XU0407S04	4X1/4 U DRIVE PIN STAINLESS	2.000 ea
LB1087	LABEL,MANUAL RESET (ROLL LABEL)	1.000 ea
MJ5001A27	32220KN GRAY SEALER *MIN BUY 4 QTS=1GAL	0.001 qt

WD1000A15	3-520132-2 AMP FLAG (4M/RL NON-CANC/NON-	2.000 ea
MJ1000A02	GREASE, POLYREX EM EXXON	0.050 lb
XY1032A02	10-32 HEX NUT DIRECTIONAL SERRATION	4.000 ea
35FN3002A05SP	EXFN, PLASTIC, 6.376 OD, .638 ID	1.000 ea
MG1025C02	WILKOFASG SG, 787.105, TAN	0.017 ga
HA3100A18	THRUBOLT 10-32 X 9.250	4.000 ea
TP5059	GENERIC WELDED THERMAL, 7" LEAD KIT	1.000 ea
SP5051A24	MODEL 35 TORQ STATIONARY SWITCH FOR "L"	1.000 ea
LC0269	1PH,DV,REV,THERMAL,7 LD,L.AMP THRU HTR H	1.000 ea
LB1624	COMBINED WARNING LABEL, ISO/ANSI PICTOGR	1.000 ea
MN416A01	TAG-INSTAL-MAINT no wire (2400 bx)4/22	1.000 ea
NP1280L	ALUM FARM DUTY UL CC THERMAL	1.000 ea
36PA1000	PKG GRP, PRINT PK1016A06	1.000 ea
FE-0000001	ZRTG FE ASSEMBLY	1.000 ea
PE-0000002	ZRTG PE ASSEMBLY	1.000 ea

Accessories

Part number	Description	Multiplier
35-3300FD	C FACE KIT FARM DUTY 143-5TC ENCL, 6205	A8
35EP1506A01SP	D-FLANGE KIT	A8

AC Induction Motor Performance Data

Record # 108283

Typical performance - not guaranteed values

Winding: 35WGG385-R001		Type: 3524L	Enclosure: TEFC	
Nameplate Data			230 V, 60 Hz: High Voltage Connection	
Rated Output (HP)	1	Full Load Torque	3.019 LB-FT	
Volts	115/230	Start Configuration	direct on line	
Full Load Amps	13/6.5	Breakdown Torque	8.54 LB-FT	
R.P.M.	1725	Pull-up Torque	5.27 LB-FT	
Hz	60 Phase	Locked-rotor Torque	8.18 LB-FT	
NEMA Design Code	L KVA Code	Starting Current	39.3 A	
Service Factor (S.F.)	1.15	No-load Current	4.41 A	
NEMA Nom. Eff.	70 Power Factor	Line-line Res. @ 25°C	2.9123 Ω A Ph 2.3517 Ω B Ph	
Rating - Duty	40C AMB-CONT	Temp. Rise @ Rated Load	76°C	
S.F. Amps		Temp. Rise @ S.F. Load	91°C	

Load Characteristics 230 V, 60 Hz, 1 HP

% of Rated Load	25	50	75	100	125	150	S.F.
Power Factor	38	53	66	74	80	84	78
Efficiency	50.9	64	68.9	69.6	67.9	64.4	68.6
Speed	1783.6	1771.8	1757.4	1741.9	1721.6	1695.1	1730
Line amperes	4.44	4.81	5.47	6.29	7.41	8.78	6.96

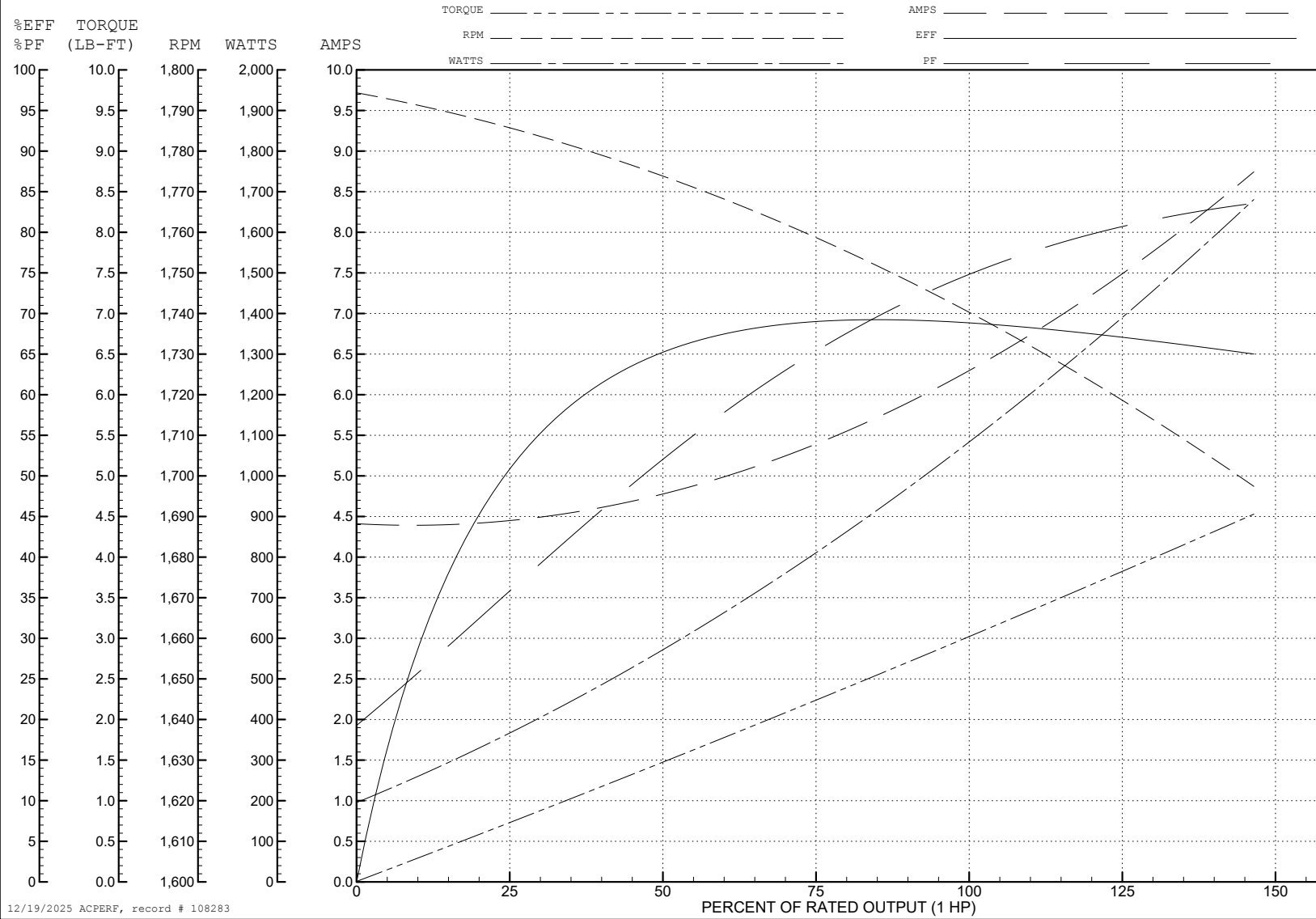
ABB Motors and Mechanical Inc.

WINDING # 35WGG385

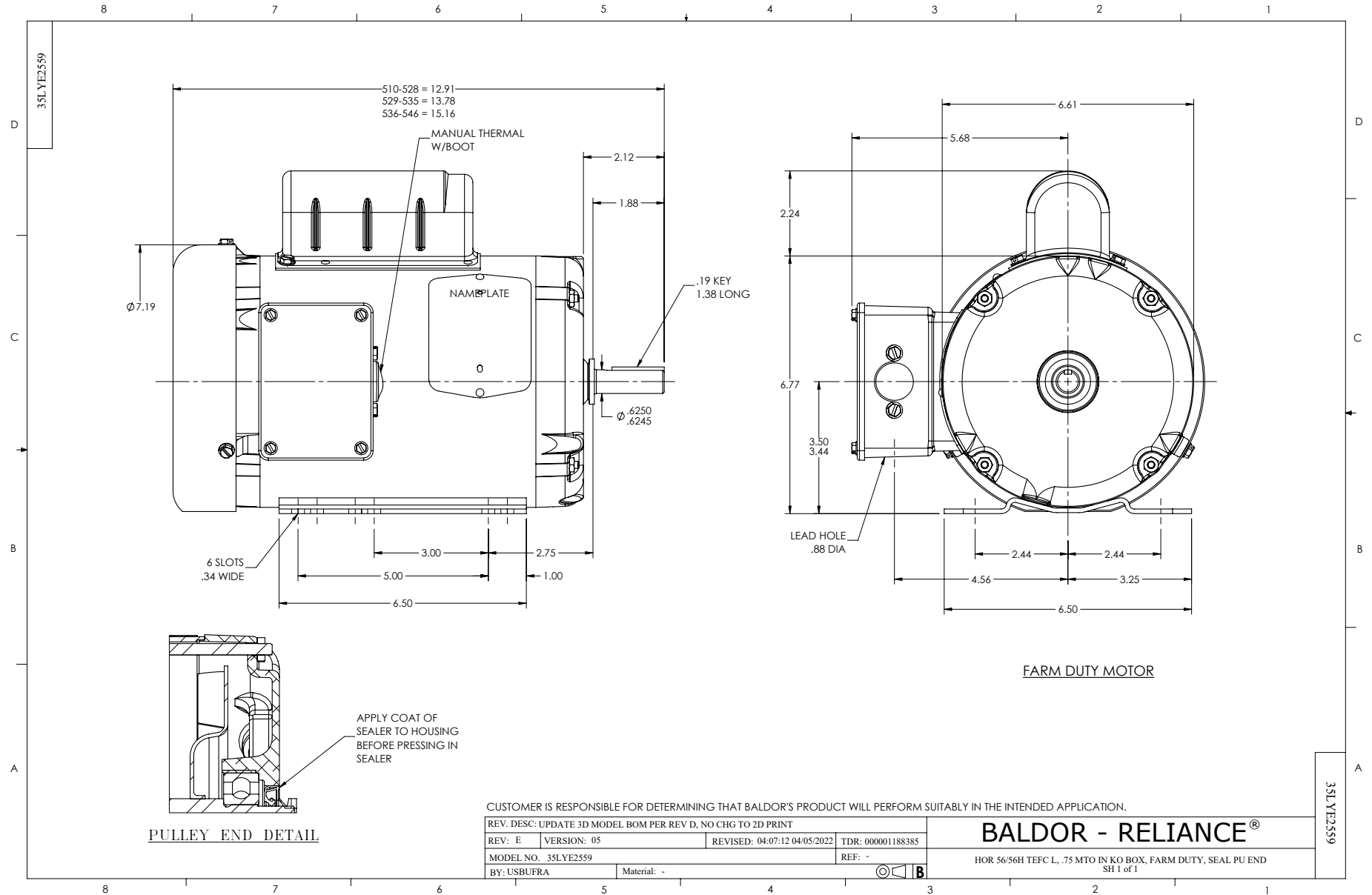
Typical performance - not guaranteed values.

1 HP 1 PH 60 HZ 1725 RPM 230 V 3524L

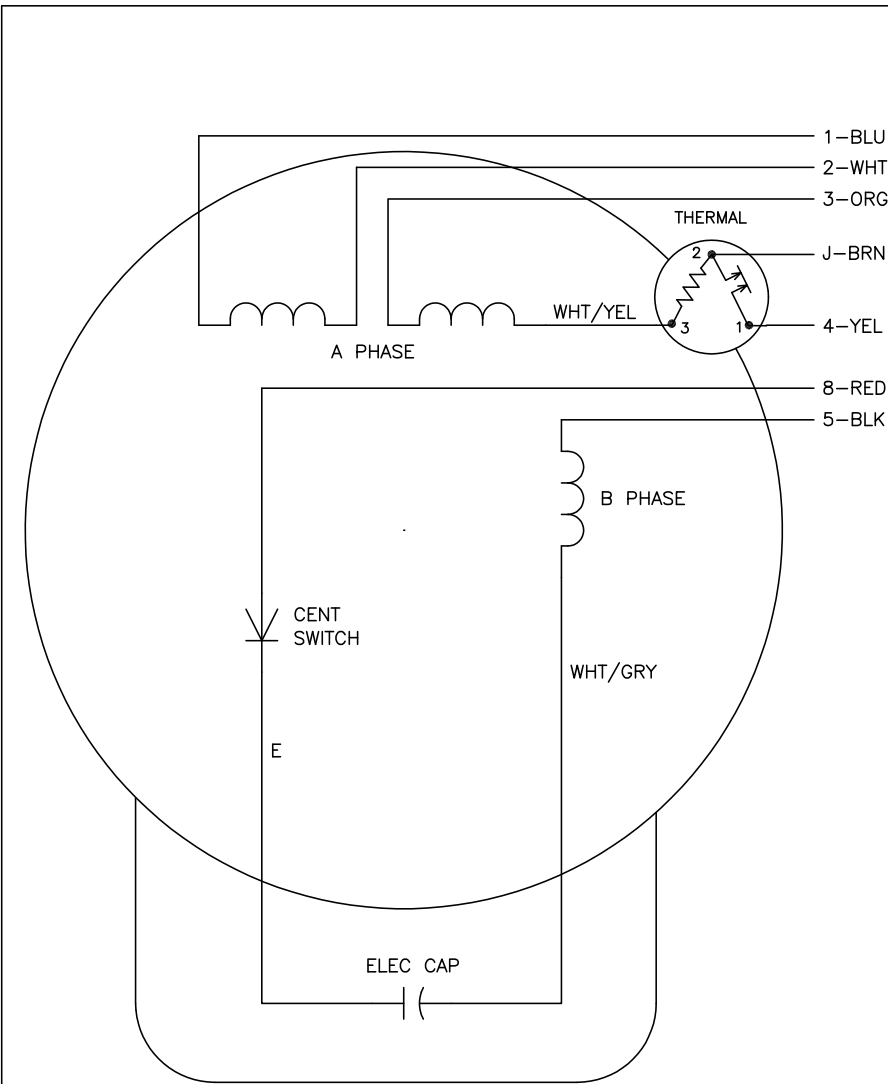
TORQUES (LB-FT): PO=8.54 PU=5.27 LR=8.18 LRA=39.3



12/19/2025 ACPERF, record # 108283



CD0269



	LINE A	LINE B	JOIN	JOIN
HIGH STD	1,8	4	2,3,5	J
HIGH OPP	1,5	4	2,3,8	J
LOW STD	1,3,8	4	-	2,J,5
LOW OPP	1,3,5	4	-	2,J,8

NOTES:

1. STANDARD ROTATION IS CCW FACING END OPPOSITE SHAFT EXTENSION.
2. MULTIPLE CAPACITORS ARE CONNECTED IN PARALLEL UNLESS OTHERWISE SPECIFIED.
3. LEAD COLORS ARE OPTIONAL. LEADS MUST ALWAYS BE NUMBERED AS SHOWN.

CD0269

REV. DESC: REVISE TO SHOW OPTIONAL COLORS			
REV. LTR: E	BY: JLP	REVISED: 04/08/99 1:07	TDR: 0178636
69Z000		FILE: AAA00007421	MDL: -
		MTL: -	

BALDOR ELECTRIC Co.

TYPE L, DV, REV, THERMAL, B PH AMPS THRU HTR HVC, 7 LEAD