



Customer information packet

EMM3714

7.5KW, 1770RPM, 3PH, 60HZ, D132M, 3752M, TEFC

Brahma Engineering LLC.

Class - None

Division - Not Applicable

Specifications

Enclosure	TEFC
Frame	D132M
Frame Material	Steel
Frequency	60.00 Hz
Haz Area Class and Group	None
Haz Area Division	Not Applicable
Motor Letter Type	Three Phase
Output @ Frequency	7.500 KW @ 60 HZ
Phase	3
Synchronous Speed @ Frequency	1800 RPM @ 60 HZ
Voltage @ Frequency	230.0 V @ 60 HZ 460.0 V @ 60 HZ
Agency Approvals	CSA UR
Ambient Temperature	40 °C
Auxillary Box	No Auxillary Box
Auxillary Box Lead Termination	None
Base Indicator	Rigid
Bearing Grease Type	Polyrex EM (-20F +300F)
Blower	None
Current @ Voltage	12.500 A @ 460.0 V 25.000 A @ 230.0 V 27.000 A @ 208.0 V
Design Code	A
Drip Cover	No Drip Cover
Duty Rating	CONT
Efficiency @ 100% Load	91.7 %
Electrically Isolated Bearing	Not Electrically Isolated
Feedback Device	NO FEEDBACK
Frame Prefix	D
Front Shaft Indicator	None
Heater Indicator	No Heater

Part detail

Revision	B
Type	AC
Mech. spec.	37E617
Base	
Status	PRD/A
Elec. spec.	37WGL865
Layout	37LYE617
Eff. date	06-20-2024
CD Diagram	CD0005
Poles	04
Leads	9#14
Proprietary	False
Created date	02-01-2021

High Voltage Full Load Amps	12.5 a
Insulation Class	F
Inverter Code	Inverter Ready
KVA Code	K
Lifting Lugs	Standard Lifting Lugs
Locked Bearing Indicator	No Locked Bearing
Motor Lead Quantity/Wire Size	9 @ 14 AWG
Motor Lead Termination	Flying Leads
Motor Standards	IEC
Motor Type	3752M
Mounting Arrangement	B3
Number of Poles	4
Overall Length	20.29 IN
Power Factor	85
Product Family	General Purpose
Pulley End Bearing Type	Ball
Pulley Face Code	Standard
Pulley Shaft Indicator	Tapped & Key
Rodent Screen	None
Service Factor	1.15
Shaft Diameter	1.497 IN
Shaft Ground Indicator	No Shaft Grounding
Shaft Rotation	Reversible
Shaft Slinger Indicator	Shaft Slinger
Speed	1770 rpm
Speed Code	Single Speed
Starting Method	Direct on line
Thermal Device - Bearing	None
Thermal Device - Winding	None
Vibration Sensor Indicator	No Vibration Sensor
Winding Thermal 1	None
Winding Thermal 2	None

Nameplate

NP1159L			
CAT.NO.	EMM3714		
SPEC.	37E617L865G1		
IEC FRAME	D132M	KW	7.5
VOLTS	230/460		
AMP	25/12.5		
RPM	1770	ENCL	TEFC
HZ	60	PH	3 CL F
SER.F.	1.15	DES	A CODE K
NEMA-NOM-EFF	91.7	I.P.	54
RATING	40C AMB-CONT		
CC	010A		
DE	6208	ODE	6206
SER. #	10 HP		

Parts list

Part number	Description	Quantity
SA390629	SA 37E617L865G1	1.000 ea
RA381080	RA 37E617L865G1	1.000 ea
HW3200A01	3/8-16X3/4 EYEBOLT WELDED F/S	1.000 ea
37CB3004	37 CB CASTING W/1.09 LEAD HOLE @ 6:00	1.000 ea
37GS1000SP	GASKET, CONDUIT BOX STD., .06 THICK LEXI	1.000 ea
51XW2520A12	.25-20 X .75, TAPTITE II, HEX WSHR SLTD	2.000 ea
11XW1032G06	10-32 X .38, TAPTITE II, HEX WSHR SLTD U	1.000 ea
37EP3101A01	FR ENDPLATE, FOR ROUTING PURPOSES	1.000 ea
HW4500A01	1641B(ALEMITE)400 UNIV, GREASE FITT	1.000 ea
HW5100A06	W2420-025 WVY WSHR (WB)	1.000 ea
37EP3100A11	PU ENDPLATE, MACH	1.000 ea
HW4500A01	1641B(ALEMITE)400 UNIV, GREASE FITT	1.000 ea
XY3118A12	5/16-18 HEX NUT DIRECTIONAL SERRATION	4.000 ea
51XB1214A20	12-14X1.25 HXWSSLD SERTYB	1.000 ea
07FH4007SP	PRIMED	1.000 ea
51XW1032A06	10-32 X .38, TAPTITE II, HEX WSHR SLTD S	3.000 ea
37CB4516	LIPPED LID FOR 37 FRAME NEC KOBX	1.000 ea
37GS1008	37 GS FOR CB LID - LEXIDE	1.000 ea
51XW0832A07	8-32 X .44, TAPTITE II, HEX WSHR SLTD SE	4.000 ea
HA1005A12	SLINGER, OD 2.50, ID 1.433, 208 BRG	1.000 ea
HW2505B19	KEY, 8 X 10 MM X 2.125 IN	1.000 ea
85XU0407S04	4X1/4 U DRIVE PIN STAINLESS	2.000 ea
MJ1000A02	GREASE, POLYREX EM EXXON	0.050 lb
37FN3002C01	EXFN, PLASTIC, 6.00 OD, 1.155 ID	1.000 ea
MG1050Y01	CELEROL BALDOR GOLD	0.028 ga
HA3104A25	THRUBOLT .31-18 X 14.75	4.000 ea
LC0005	CONN.DIA.,TY M,9-LD,DUAL VOLT,REVERSING	1.000 ea
NP1159L	SS SUPER-E IEC UL CC	1.000 ea
37PA1074	PALLET PACK GRP, PRINT BOX PK1026A06	1.000 ea
MN416A01	TAG-INSTAL-MAINT no wire (2400 bx)4/22	1.000 ea
LB1624	COMBINED WARNING LABEL, ISO/ANSI PICTOGR	1.000 ea

AC Induction Motor Performance Data

Record # 86469

Preliminary Data Sheet

Winding: 37WGL865-R006		Type: 3752M	Enclosure: TEFC		
Nameplate Data		460 V, 60 Hz: High Voltage Connection			
Rated Output (KW)	7.5	Full Load Torque	29.7 LB-FT		
Volts	230/460	Start Configuration	direct on line		
Full Load Amps	25/12.5	Breakdown Torque	102 LB-FT		
R.P.M.	1770	Pull-up Torque	46.9 LB-FT		
Hz	60 Phase	3	Locked-rotor Torque	62.2 LB-FT	
NEMA Design Code	A	KVA Code	K	Starting Current	101 A
Service Factor (S.F.)	1.15	No-load Current	5.33 A		
NEMA Nom. Eff.	91.7	Power Factor	85	Line-line Res. @ 25°C	0.982 Ω
Rating - Duty	40C	AMB-CONT		Temp. Rise @ Rated Load	69°C
S.F. Amps	28.2/14.6			Temp. Rise @ S.F. Load	92°C
				Locked-rotor Power Factor	42
				Rotor inertia	1.28 lb-ft ²

Load Characteristics 460 V, 60 Hz, 7.5 KW

% of Rated Load	25	50	75	100	125	150	S.F.
Power Factor	44	66	77	82	84	85	84
Efficiency	88.7	92.3	92.7	92.2	91.3	90	91.4
Speed	1793	1786	1778	1770	1761	1751	1762
Line amperes	6.05	7.73	9.9	12.5	15.3	18.3	14.1

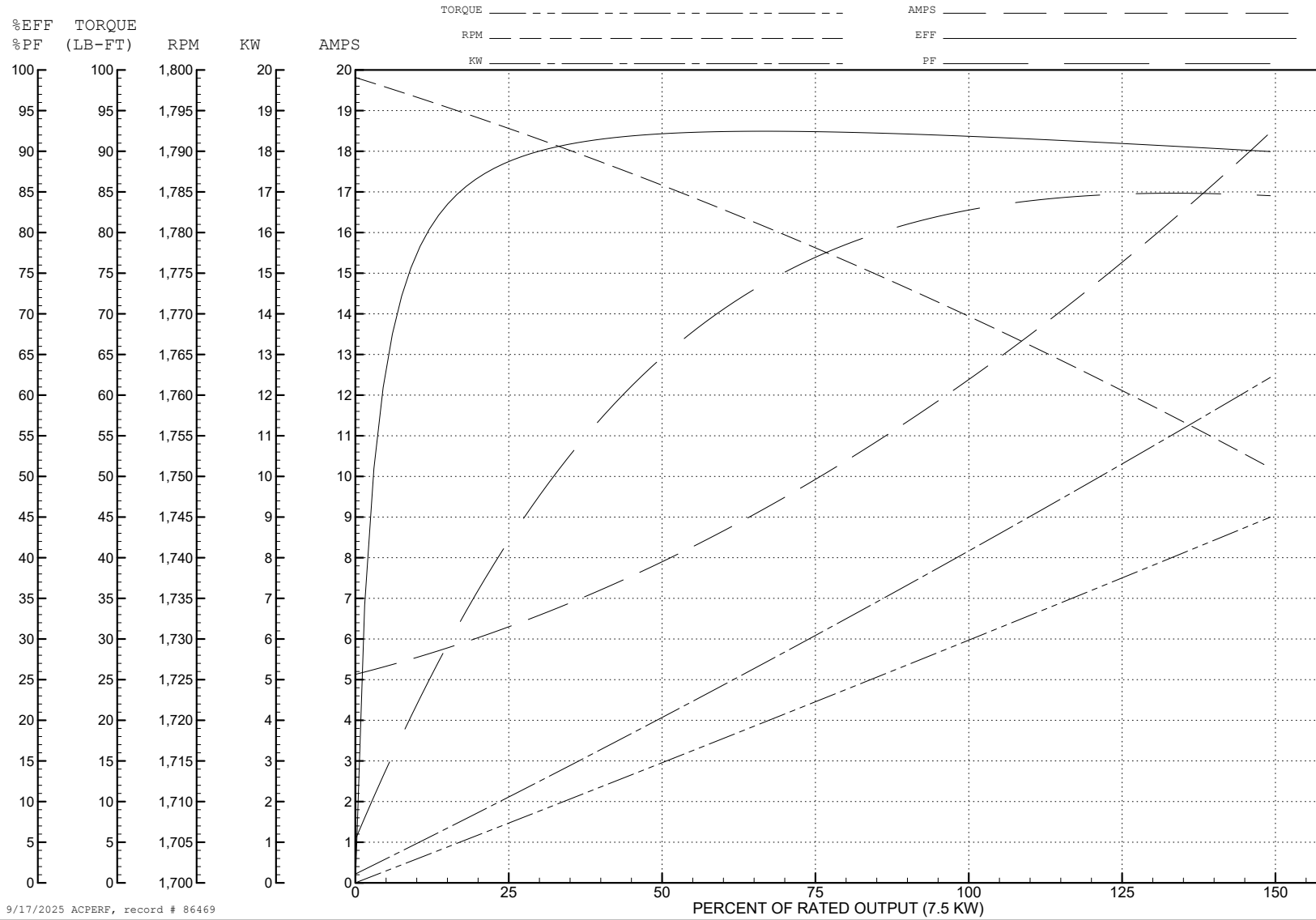
ABB Motors and Mechanical Inc.

WINDING # 37WGL865

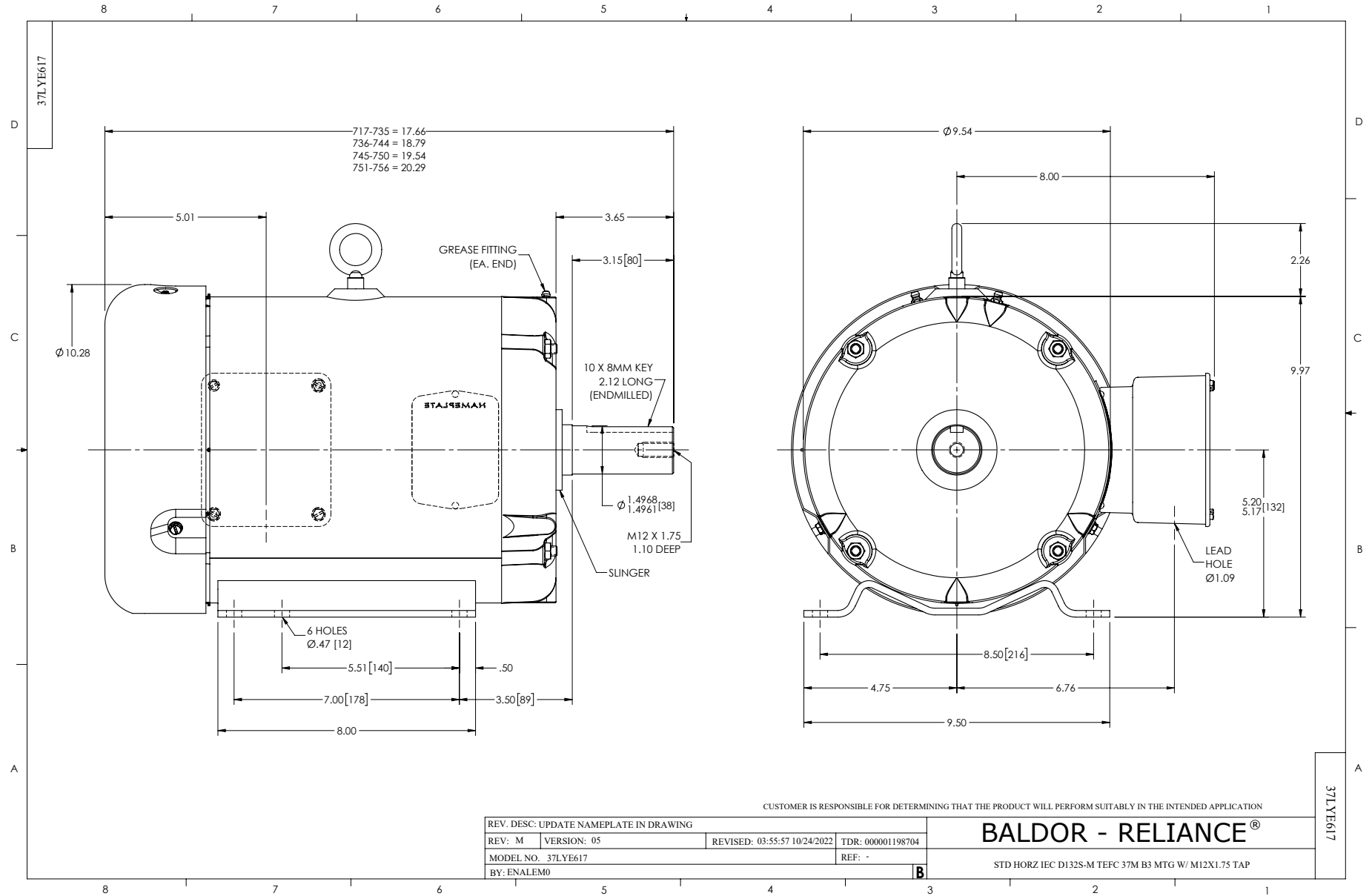
Typical performance - not guaranteed values.

7.5 KW 3 PH 60 HZ 1770 RPM 460 V 3752M

TORQUES (LB-FT): PO=102 PU=46.9 LR=62.2 LRA=101



9/17/2025 ACPERF, record # 86469



CD0005



LOW VOLTAGE
(2Y)



LINE

HIGH VOLTAGE
(1Y)



LINE

NOTES:

1. INTERCHANGE ANY TWO LINE LEADS TO REVERSE ROTATION.
2. OPTIONAL THERMOSTATS ARE PROVIDED WHEN SPECIFIED.
3. ACTUAL NUMBER OF INTERNAL PARALLEL CIRCUITS MAY BE A MULTIPLE OF THOSE SHOWN ABOVE.
4. LEAD COLORS ARE OPTIONAL. LEADS MUST ALWAYS BE NUMBERED AS SHOWN.

CD0005

REV. DESC: REVISE TO SHOW OPTIONAL COLORS			
REV. LTR: E	BY: JLP	REVISED: 01/19/99 10:15	TDR: 0171435
S00000		FILE: AAA00005140	MDL: -
		MTL: -	

BALDOR ELECTRIC Co.

3PH, DV, 9 LEADS