



Customer information packet

35E5832S719G1

1HP, 3450RPM, 1PH, 60HZ, 56C, 3524L, TEFC, F2, N

Brahma Engineering LLC.

Class - None

Division - Not Applicable

Specifications

Enclosure	TEFC
Frame	56C
Frame Material	Steel
Frequency	60.00 Hz
Haz Area Class and Group	None
Haz Area Division	Not Applicable
Motor Letter Type	Cap Start, Induction Run
Output @ Frequency	1.000 HP @ 60 HZ
Phase	1
Synchronous Speed @ Frequency	3600 RPM @ 60 HZ
Voltage @ Frequency	120.0 V @ 60 HZ 220.0 V @ 60 HZ
Agency Approvals	C UR US
Ambient Temperature	40 °C
Auxillary Box	No Auxillary Box
Auxillary Box Lead Termination	None
Base Indicator	Rigid
Bearing Grease Type	Polyrex EM (-20F +300F)
Blower	None
Current @ Voltage	13.900 A @ 120.0 V 6.600 A @ 220.0 V
Design Code	N
Drip Cover	No Drip Cover
Duty Rating	CONT
Efficiency @ 100% Load	65.0 %
Electrically Isolated Bearing	Not Electrically Isolated
Feedback Device	NO FEEDBACK
Front Shaft Indicator	None
Heater Indicator	No Heater
High Voltage Full Load Amps	6.6 a
Insulation Class	B
Inverter Code	Not Inverter

Part detail

Revision	E
Type	AC
Mech. spec.	35E5832
Base	
Status	PRD/A
Elec. spec.	35WGS719
Layout	35LYE5832
Eff. date	07-24-2024
CD Diagram	CD0008
Poles	02
Leads	4#16 A&J,1#14 #4TH,2#18 B PH
Proprietary	False
Created date	03-01-2022

IP Rating	NONE
KVA Code	M
Lifting Lugs	No Lifting Lugs
Locked Bearing Indicator	Locked Bearing
Motor Lead Quantity/Wire Size	4 @ 16 AWG, A&J
Motor Lead Termination	Cord And Plug
Motor Standards	NEMA
Motor Type	3524L
Mounting Arrangement	F2
Number of Poles	2
Overall Length	13.25 IN
Power Factor	75
Product Family	General Purpose
Pulley End Bearing Type	Ball
Pulley Face Code	C-Face
Pulley Shaft Indicator	Standard
Rodent Screen	None
Service Factor	1.15
Shaft Diameter	0.625 IN
Shaft Ground Indicator	No Shaft Grounding
Shaft Rotation	Reversible: Connected OPP STD
Shaft Slinger Indicator	No Slinger
Speed	3450 rpm
Speed Code	Single Speed
Starting Method	Direct on line
Thermal Device - Bearing	None
Thermal Device - Winding	None
Vibration Sensor Indicator	No Vibration Sensor
Winding Thermal 1	None
Winding Thermal 1 Location	SB
Winding Thermal 2	None

Nameplate

NP1257L									
CAT.NO.									
SPEC.	35E5832S719G1								
HP	1								
VOLTS	120/220								
AMP	13.9/6.6								
RPM	3450								
FRAME	56C			HZ	60		PH	1	
SER.F.	1.15	CODE	M	DES	N	CL	B		
NEMA-NOM-EFF	65	PF	75						
RATING	40C AMB-CONT								
CC									
DE	6205	ODE	6203						
ENCL	TEFC	SN							

Parts list

Part number	Description	Quantity
SA401611	SA 35E5832S719G1	1.000 ea
RA392850	RA 35E5832S719G1	1.000 ea
EC1460A05SP	ELEC CAP, 460-552 MFD, 125V, 2.06D X 3.	1.000 ea
NS2512A01	INSULATOR, CONDUIT BOX X	1.000 ea
35CB3007A03	35 CB .88 DIA @ 6:00, .50 DIA @ 12:00	1.000 ea
36GS1000SP	GASKET-CONDUIT BOX, .06 THICK #SV-330 LE	1.000 ea
51XB1016A07	10-16 X 7/16 HXWSSLD SERTYB	2.000 ea
11XW1032G06	10-32 X .38, TAPTITE II, HEX WSHR SLTD U	1.000 ea
51XW0832A07	8-32 X .44, TAPTITE II, HEX WSHR SLTD SE	2.000 ea
35EP3122K00	MASTER ODE,203 BRG.,683SH,#26 DRN,FH MTG	1.000 ea
LD5018A03	CORD & PLUG SET 16/3 SJOOW 90C 300V 2' 6	1.000 ea
WD4500A01	T&B 3302M-SL,CRD NN.50 NPS, .250-.590 OD	1.000 ea
35CB4802A02SP	CAPACITOR COVER, STAMPED X	1.000 ea
35GS3001A02	GASKET, CA.COVER, 5.38 LONG .06 CS301	1.000 ea
SP9071	SWITCH, DP/ST, 1 1/2 HP, SPADE TERMINALS	1.000 ea
WD4000A06SP	SWITCH GUARD FOR TOGGLE SWITCH	1.000 ea
51XB1016A05	10-16X5/16HX WA SL SR TYB (F/S)	2.000 ea
HW5100A03	WAVY WASHER (W1543-017)	1.000 ea
51XN1032A20	10-32 X 1 1/4 HX WS SL SR	2.000 ea
35EP3307A00	MASTER DE,205 BRG,1.623SH,#26 DRN	1.000 ea
HW4600H11	SEAL 0.938 X 1.624 X 0.250 SINGLE LIP DB	1.000 ea
35FN3002A05SP	EXFN, PLASTIC, 6.376 OD, .638 ID	1.000 ea
51XB1214A16	12-14X1.00 HXWSSLD SERTYB	1.000 ea
35FH4005A32SP	IEC FH NO GR SR W/3 HOLES - PRIMED	1.000 ea
51XW1032A06	10-32 X .38, TAPTITE II, HEX WSHR SLTD S	3.000 ea
35CB4521GX	CONDUIT BOX LID KIT **ORDER INDIV PARTS	1.000 ea
51XW0832A07	8-32 X .44, TAPTITE II, HEX WSHR SLTD SE	4.000 ea
HW2501D13	KEY, 3/16 SQ X 1.375	1.000 ea
HA7000A04	KEY RETAINER 0.625 DIA SHAFTS	1.000 ea
85XU0407S04	4X1/4 U DRIVE PIN STAINLESS	2.000 ea
WD1000A15	3-520132-2 AMP FLAG (4M/RL NON-CANC/NON-	2.000 ea

MJ1000A02	GREASE, POLYREX EM EXXON	0.050 lb
MG1050Y01	CELEROL BALDOR GOLD	0.017 ga
HA3100A15	THRUBOLT 10-32 X 8.375	4.000 ea
SP5051A97	MODEL 35 TORQ STAT SWITCH FOR "L" 16GA	1.000 ea
LB1118	LABEL,WARNING (ROLL LABEL)	1.000 ea
LC0008	CONNECTION LABEL	1.000 ea
NP1257L	ALUM UL CC THERMAL REV MTG	1.000 ea
36PA1000	PKG GRP, PRINT PK1016A06	1.000 ea
MN416A01	TAG-INSTAL-MAINT no wire (2400 bx)4/22	1.000 ea
FE-0000001	ZRTG FE ASSEMBLY	1.000 ea
PE-0000002	ZRTG PE ASSEMBLY	1.000 ea

AC Induction Motor Performance Data

Record # 92651

Typical performance - not guaranteed values

Winding: 35WGS719-R006		Type: 3524L		Enclosure: TEFC	
Nameplate Data			110 V, 60 Hz: Low Voltage Connection		
Rated Output (HP)		1	Full Load Torque		1.5 LB-FT
Volts		120/220	Start Configuration		direct on line
Full Load Amps		13.9/6.6	Breakdown Torque		4.7 LB-FT
R.P.M.		3450	Pull-up Torque		2.9 LB-FT
Hz	60 Phase	1	Locked-rotor Torque		3.6 LB-FT
NEMA Design Code	N KVA Code	M	Starting Current		83.2 A
Service Factor (S.F.)		1.15	No-load Current		8.79 A
NEMA Nom. Eff.	65 Power Factor	75	Line-line Res. @ 25°C		0.417 Ω A Ph 1.52 Ω B Ph
Rating - Duty		40C AMB-CONT	Temp. Rise @ Rated Load		62°C
S.F. Amps			Temp. Rise @ S.F. Load		79°C
			Locked-rotor Power Factor		79.7
			Rotor inertia		0.0664 lb-ft ²

Load Characteristics 110 V, 60 Hz, 1 HP

% of Rated Load	25	50	75	100	125	150	S.F.
Power Factor	45	59	69	75	80	82	78
Efficiency	41.1	57.2	64.9	68.9	71	71.8	70.2
Speed	3573	3555	3537	3517	3496	3473	3504
Line amperes	9.37	10.32	11.58	13.15	14.95	17.08	14.2

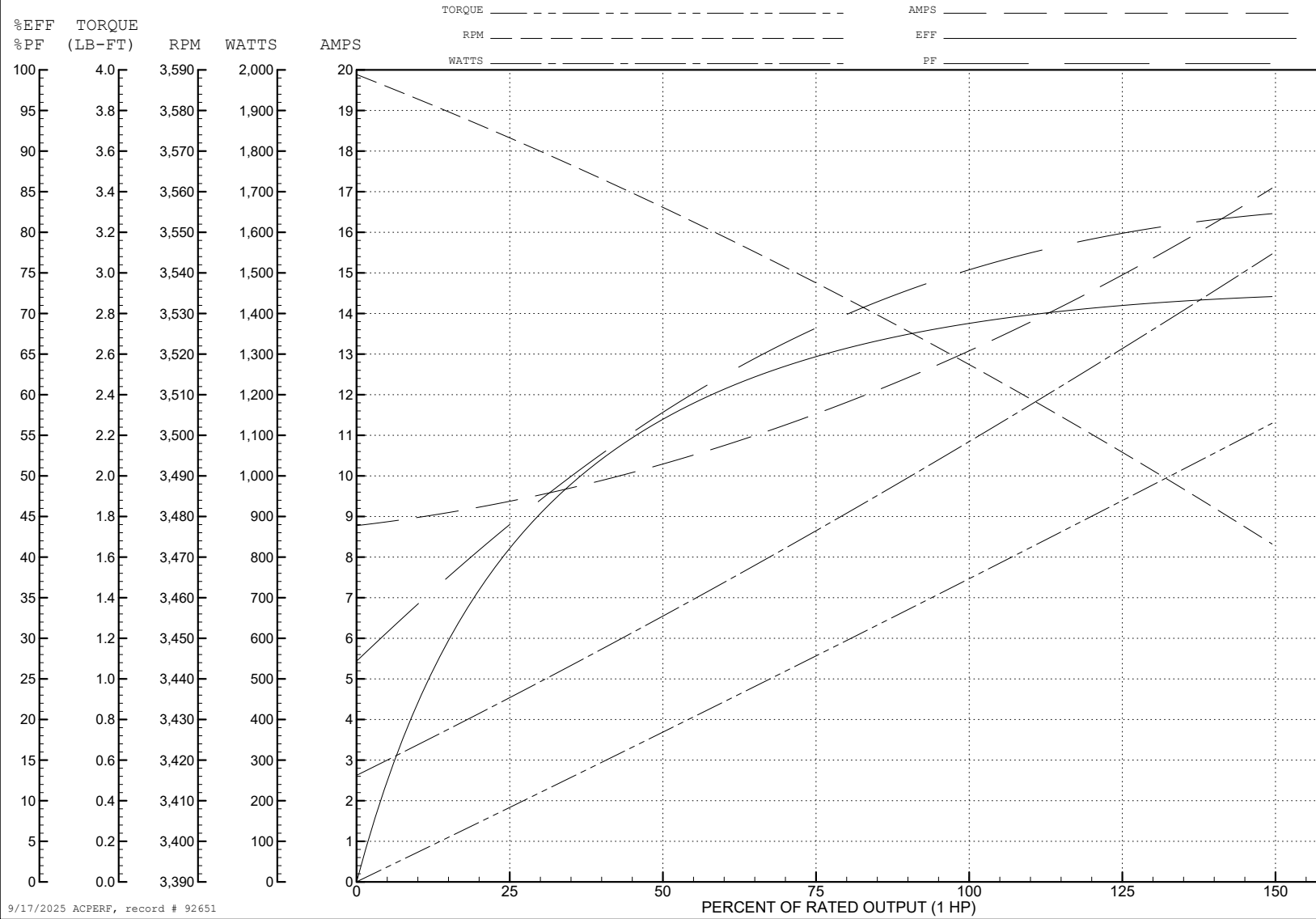
ABB Motors and Mechanical Inc.

WINDING # 35WGS719

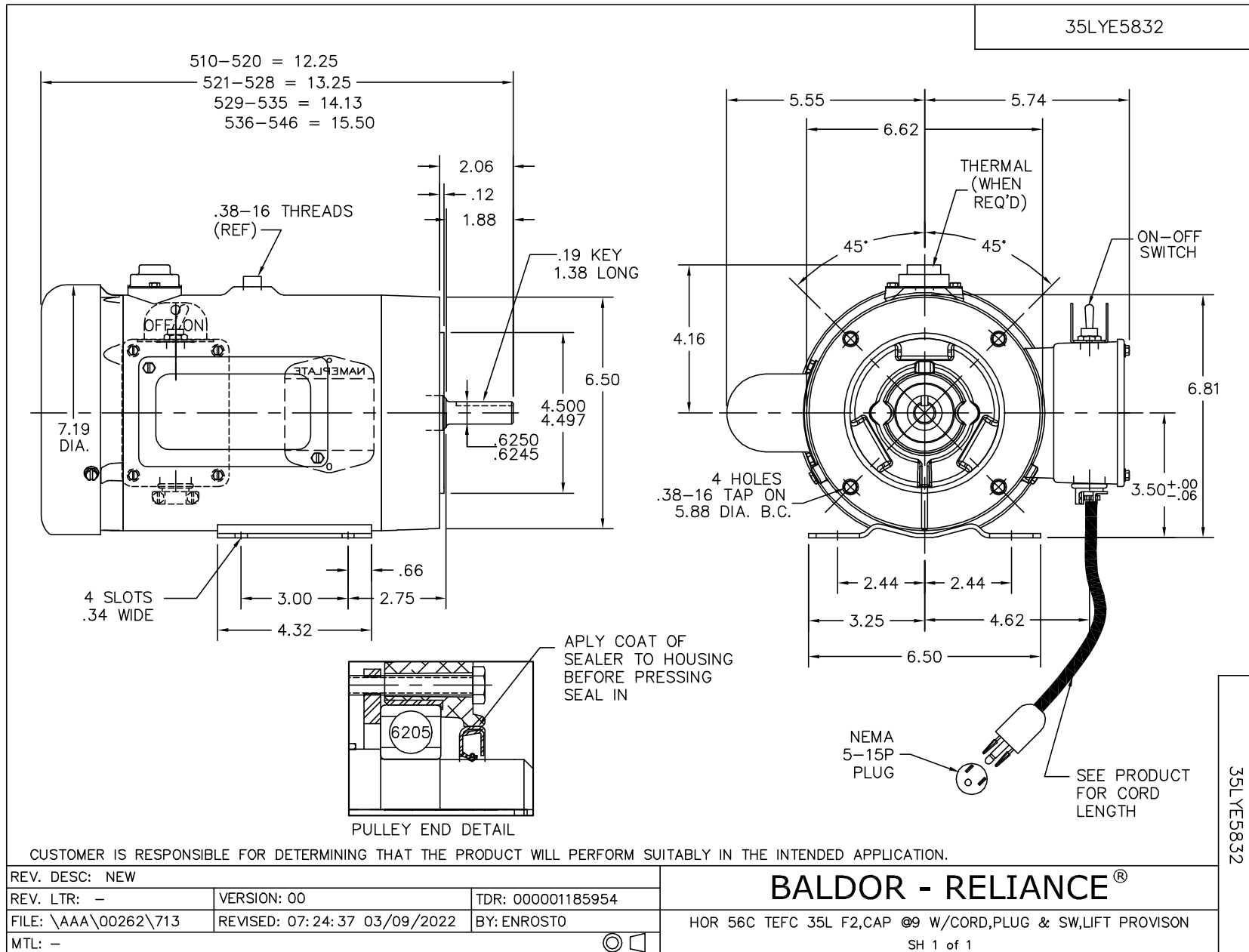
Typical performance - not guaranteed values.

1 HP 1 PH 60 HZ 3450 RPM 110 V 3524L

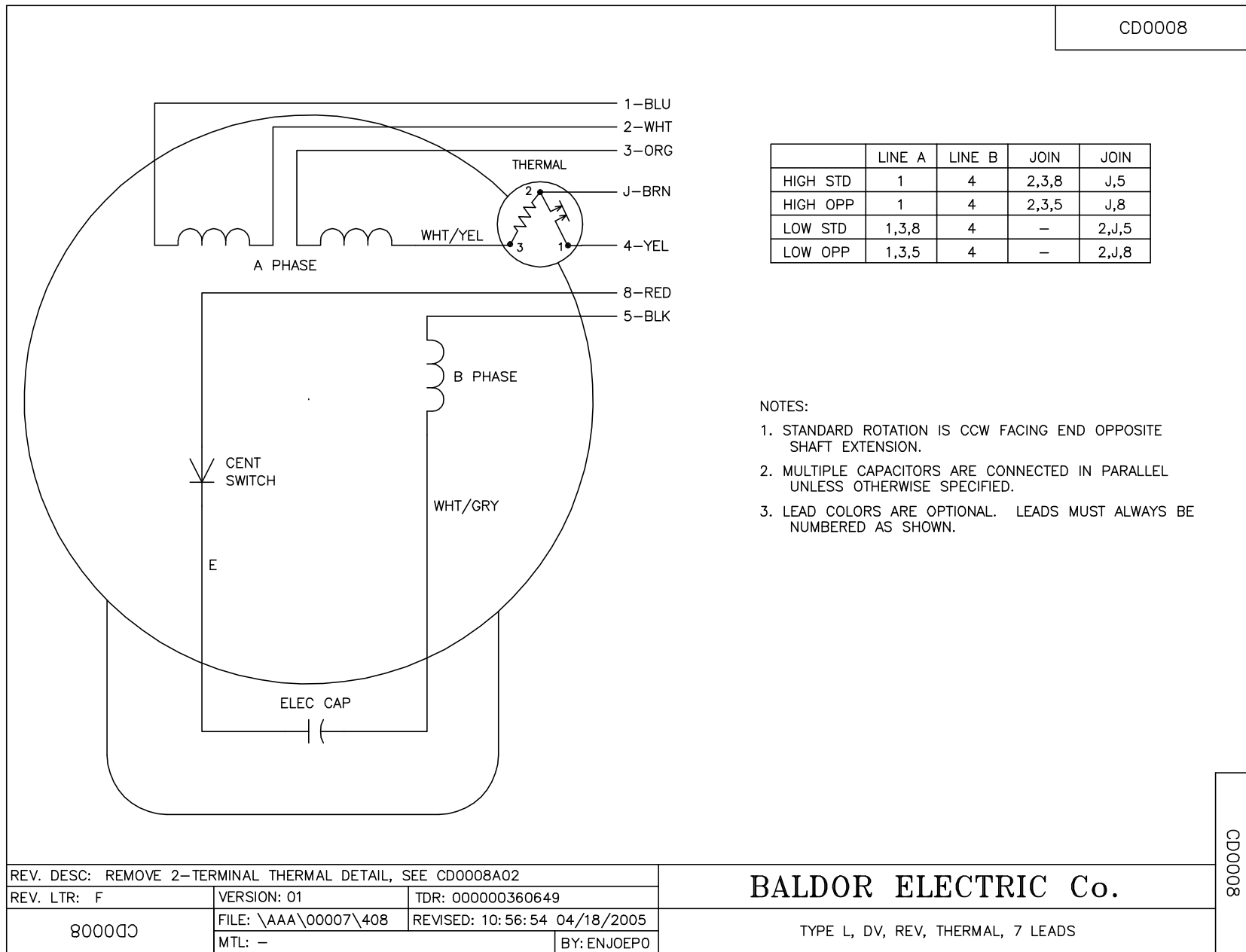
TORQUES (LB-FT): PO=4.7 PU=2.9 LR=3.6 LRA=83.2



9/17/2025 ACPERF, record # 92651



CD0008



REV. DESC: REMOVE 2-TERMINAL THERMAL DETAIL, SEE CD0008A02		
REV. LTR: F	VERSION: 01	TDR: 000000360649
800000	FILE: \AAA\00007\408	REVISED: 10:56:54 04/18/2005
	MTL: -	BY: ENJOEPO

BALDOR ELECTRIC Co.

TYPE L, DV, REV, THERMAL, 7 LEADS

CD0008